

EC Fertiliser **PENTAKEEP®**

Newly
Arginine-Containing

Hyper 5000

**Material of
chlorophyll**

Photosynthesis promoter
5-aminolevulinic acid-containing

ALA ENHANCES PHOTOSYNTHETIC CAPACITY

Nutrients Content

Total nitrogen(N):	8.0%
Water-soluble phosphorus pentoxide(P ₂ O ₅):	6.0%
Water-soluble potassium oxide(K ₂ O):	4.0%
Water-soluble magnesium oxide(MgO):	4.0%
Water-soluble boron(B):	0.170%
Water-soluble copper(Cu):	0.01%
Water-soluble iron(Fe):	
Iron(Fe) chelated by DTPA:	0.110%
Water-soluble manganese(Mn):	0.110%
Water-soluble molybdenum(Mo):	0.01%
Water-soluble zinc(Zn):	0.06%



Mascot character of SEIWA "PenTan"
Registered trademark

**5-aminolevulinic acid is
material of chlorophyll**

Much-
talked-about
ALA



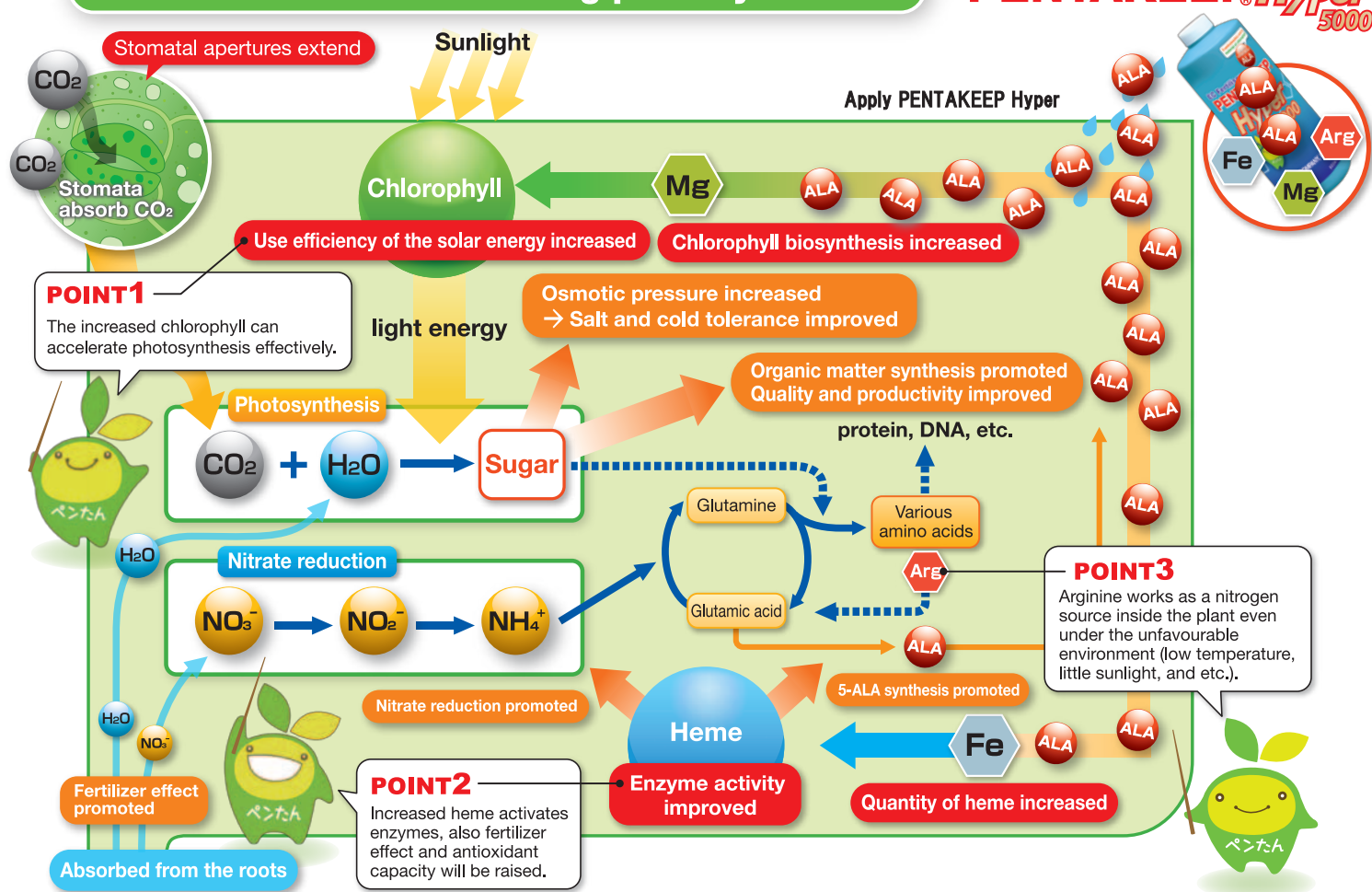
800ml(1.05kg)

The goal of SEIWA AGRICULTURE is to enrich the world agriculture production.

SEIWA AGRICULTURE CO.,LTD. 

Mechanism for accelerating photosynthesis

PENTAKEEP[®]Hyper 5000



Crops Pentakeep Hyper 5000 can be applied

The crops which showed positive effects are listed below. For further information or any inquiry, please contact us.

Leaf vegetables
Asparagus, Broccoli, Cabbage, Chive, Lettuce, Spinaches, Welsh onion, etc.
Fruit vegetables
Cucumber, Eggplant, Melon, Paprika, Pumpkin, Strawberry, Tomato, Water melon, etc.
Root vegetables
Carrot, Chinese radish, Garlic, Ginger, Onion, Potato, Sweet Potato, Turnip, etc.
Grain, Beans and Others
Broad beans, Corn, Paddy rice, green soy beans, Tarf, etc.

Fruit trees
Apple, Cherry, Citrus, Fig, Grape, Kiwi fruit, Peach, Pear, Persimmon, etc.
Potted plants
Cyclamen, Cineraria, Pansy, Primrose, Orchid, etc.
Cut flowers
Carnation, Chrysanthemum, Gerbera, Gypsophila, Lily, Lisianthus, Rose, Stock, Sun flower, Statice, etc.

Dosage

Route of Application	Application for 1ha		Interval between applications
	Water Volume	PENTAKEEP hyper 5000	
Foliar	1000-2000litres to such an extent that stems and leaves get	150-400ml	1-2weeks
Rhizosphere	the same as the usual irrigation	Approx. 800ml-1600ml/1ha on each application	

Storage & Handling Instructions

- When using, do not eat, drink or smoke. •In case of contact with eyes, rinse immediately with plenty of water and seek medical advice.
- Take off immediately all contaminated clothing. •Wear suitable protective clothing and gloves. •If swallowed, seek medical advice immediately and show this container or label.
- Keep out of reach of children. •Always replace the container cap after use. •Store out of direct sunlight above 5°C and below 30°C

Sales Agency

SEIWA AGRICULTURE CO.,LTD.

<http://pentakeep.seiwa-ltd.jp>

262-10 SHIBA SHIMOTSUKE-SHI, TOCHIGI,
323-0412 JAPAN

PHONE +81-285-50-2030 FAX +81-285-44-1755

△ To distributors

Note: Store the product in a dark place away from direct sunlight.
(Preferably at 5°C - 30°C) Don't store it at extremely low/high temperature.

1908rev.

Retailer